

1

---

---

---

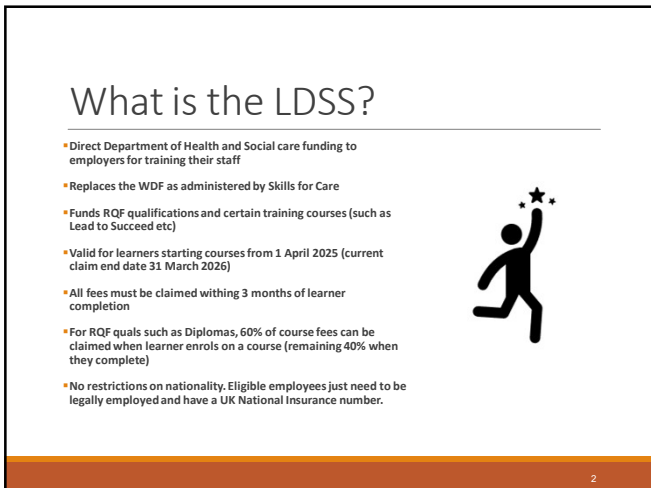
---

---

---

---

---



2

---

---

---

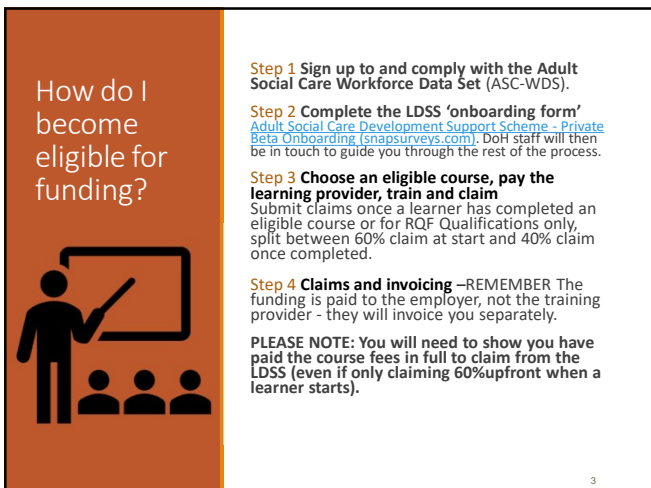
---

---

---

---

---



3

---

---

---

---

---

---

---

---

## DON'T forget.

You will still need to register with the Adult Social Care Workforce Data Set (*used to be called the NMDS*).



- An online data collection tool that specifically sources information on the workforce of the adult social care sector in England
- The intelligence gathered helps the government, DHSC and local authorities to plan, fund and monitor the sector

An establishment needs to complete an ASC-WDS workplace record before 1 April every year.

The establishment must:

Fully complete establishment information and individual ASC-WDS staff records for all workers with a minimum of 90% of the data completed in detail.

4

---

---

---

---

---

---

---

---



## ELIGIBLE COURSES

A full list of eligible training courses and RQF qualifications is on the LDSS website:

[Eligible training courses and qualifications - GOV.UK \(www.gov.uk\)](https://www.gov.uk)

*Check regularly as new courses are being added.*

5

---

---

---

---

---

---

---

---

## HOW TO START TRAINING WITH SOCIAL WORKS LTD



*Other learning providers are available, but for us...*

- ❑ To enrol learners on a course, please send the names, email addresses, and telephone numbers to our Learner Engagement Coordinator, Joanna Holmgren at [holmgren.joanna@outlook.com](mailto:holmgren.joanna@outlook.com) with John Buttle, Managing Director, copied in at [john@socialworksltd.co.uk](mailto:john@socialworksltd.co.uk)
- ❑ Tell us who from your organisation needs to be copied into learner comms (eg Coordinator, HR Officer, Reg manager etc).
- ❑ Check that you understand the commitments and guidelines you & learners need to follow to best support their learning
- ❑ We'll then send out enrolment links, confirmations etc to you and your learners, and feedback on attendance and progress
- ❑ REMEMBER You will need to pay us first in order to claim from the LDSS

**PLEASE NOTE:** Learners should have access to a computer, laptop or tablet (with a microphone and camera) and a stable internet connection. Mobile phones are not recommended.

6

---

---

---

---

---

---

---

---

### FOR NEW STAFF

#### CARE CERTIFICATE (KNOWLEDGE)\*\* & L2 CERTIFICATE IN PRINCIPLES OF MEDICATION HANDLING AND ADMINISTRATION (RQF).

We've trained over thousands of new staff on this route since March 2020.

All taught by experienced and qualified trainers with extensive social care experience. We use a mix of Zoom conferencing, email and telephone support as well as a wealth of resources and guidance material.

- ❑ Fully funded by the LDSS claim value for the L2 Medication RQF course
- ❑ NEW COHORTS STARTING EVERY THURSDAY (continuing Friday and the following Monday and Tuesday).
- ❑ Training Zoom sessions will be from 9.30 am- 12.30pm each day, with learners spending the rest of each day on tutor led coursework. (Approx homework commitment – 12hrs on top of 4 x 2.5hrs Zoom Sessions).
- ❑ The Medication Level 2 (RQF) can be taken as a stand-alone course on the Thurs and Fri only.  
\*Please note the training covers all the Care Certificate Knowledge Standards except Basic Life Support, which you can either cover inhouse, or Social Works Ltd can do it for you over an additional ½ day training which you will need to contact us directly to arrange).

7

7

### FOR MANAGERS AND COORDINATORS...

#### MANAGEMENT MULTI-SESSION PROGRAMMES

- WELL LED - Developing skills for established managers  
4-day course, with a mix of live virtual tutorials and digital resources.
- LEAD-TO-SUCCEED - Preparing new and aspiring managers  
5-day course, with a mix of live virtual tutorials and digital resources.

#### SINGLE SESSION MANAGEMENT CPD MODULES

- UNDERSTANDING SELF-MANAGEMENT SKILLS
- UNDERSTANDING PERFORMANCE-MANAGEMENT
- UNDERSTANDING WORKPLACE CULTURE

**FULLY FUNDED THROUGH THE LDSS**

8

8

### FOR SPECIALIST KNOWLEDGE...

#### ❑ LEVEL 2 CERTIFICATE IN INTRODUCTION TO AUTISTIC SPECTRUM CONDITIONS (RQF)

Run over three, 2 hour Live Zoom sessions + approx. 8hrs homework

#### ❑ LEVEL 2 AWARD IN AWARENESS OF DEMENTIA (RQF)

One 4 hour Live Zoom session + approx. 6hrs homework

**FULLY FUNDED THROUGH THE LDSS**

9

9

## FOR Diplomas...

**We do L3 and L5 Diplomas, with LDSS funding plus employer/employee contribution.**

We don't use the Apprenticeship route - this route is a lot quicker, has no tricky eligibility criteria and to cheer learners, up has no basic skills exams.

**ALSO the LDSS will not fund learners who are on an Apprenticeship.**

**Most sessions are via Zoom or remote support with the 2-3 on site visit/observations towards the middle to end of a course.**

*\* Please note that you can claim 60% of the funding when a learner starts, and 40% when they finish. This applies to fees only, not any learner/employer contribution.*

10

10

## FOR New L2 Award in Adult Social Care Certificate...

**This is a new a new qualification for nearly new staff.**

It's a nationally recognised formal qualification following the Care Certificate standards.

**Sessions are via 4 Zoom seminars held one a month with remote support and 3-4 on site visit/observations towards the middle to end of a course.**

*\* Please note that you can claim 60% of the funding when a learner starts, and 40% when they finish.*

**FULLY FUNDED – no employer/learner contribution.**

11

11

## FOR TRAINERS



**The LDSS now funds the L3 Award in Understanding the principles and practices of Assessment (RQF Assessors Award)**

This qualification will enable staff to become RQF Assessors within your organisation, so they can help assess your learners if they are on Diplomas or the new L2 Adult Social Care Award.

**FULLY FUNDED – no employer/learner contribution.**

12

12

## Important Links

Get signed up with the LDSS:

[Adult Social Care Development Support Scheme - Private Beta Onboarding \(snapsurveys.com\)](https://snapsurveys.com)

How the LDSS works:

[Learning and Development Support Scheme for the adult social care workforce: a guide for employers - GOV.UK \(www.gov.uk\)](https://www.gov.uk)

Eligible training courses and RQF Qualifications:

[Eligible training courses and qualifications - GOV.UK \(www.gov.uk\)](https://www.gov.uk)

13

13

## Questions?



**Contact:**

[john@socialworksltd.co.uk](mailto:john@socialworksltd.co.uk)

Or call

07968 195491

14

14